

# F21-E2B

series

INDUSTRIAL  
RADIO REMOTE CONTROLLER

Safe

Tough

Affordable



E2B-8  
Transmitter

E2B  
Receiver

E2B  
Transmitter

E2M-8  
Transmitter

E2M  
Transmitter

E2S  
Transmitter

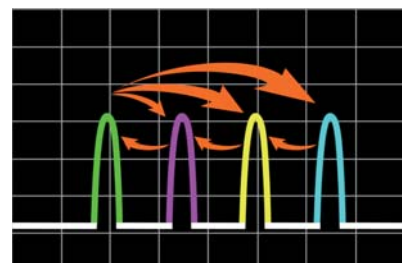


# F21-E2B Series Features

Affordable  
Tough  
Safe

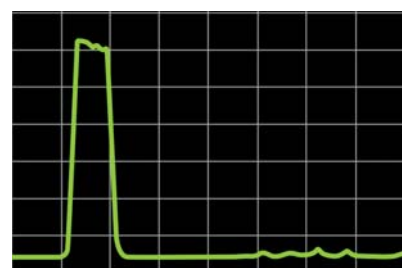
## Auto Frequency Selection

- Chooses top grade RF IC with sophisticated design. It provides great performance on radio channel selectivity.
- Real time frequency changing technology which provides the best operating experience and free from interference.
- No channel changing required when multiple radio controllers are used at the same time.



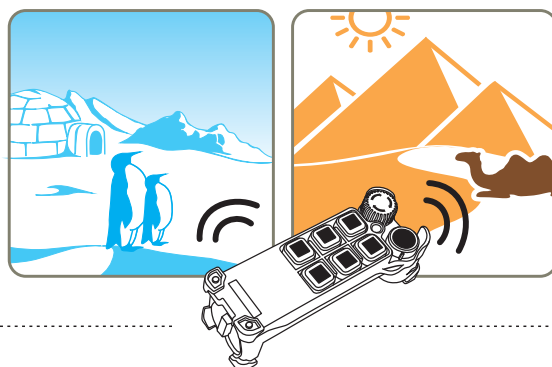
## Radio Frequency Filtering

- A sophisticated Surface Acoustic Wave (SAW) filter blocks unwanted radio signal to ensure smooth radio link.
- It creates a secure and reliable operation experience even in a complicated industrial working environment.



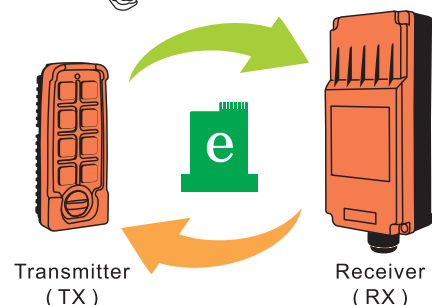
## Reliable Communication

- F21-E2B, a smart radio controller made by high technology.
- 100% frequency quality inspection on all radio controllers prior to delivery and ensure frequency tolerance within 0.000001%.



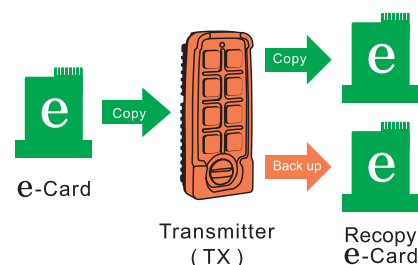
## e-Card (Plug and Play)

- e-Card works similar to SIM card in the mobile phone.
- All system data are carried on a small e-Card for easy transfer to a spare system when needed.
- e-Card is interchangeable between transmitter & receiver. It allows spare transmitter or receiver to resume to work without any downtime.



## e-Card Duplicator

- The transmitter also acts as e-Card duplicator for data back-up and transfer.
- No need to buying COPIER anymore.







General AA



Rechargeable AA

Rechargeable AA



## Budget & Environmental Saving

Transmitter with extremely low battery power consumption.

All F21-E2B series transmitters use two AA size batteries. (Carbon Zinc, Alkaline, Ni-MH, Ni-Cd are all acceptable)

You can also select operating range:

- It saves and extends battery life.
- It allows more radio controllers running in a same area.

## Security Enhanced & Anti-Spy

- Transmitter with its powerful processor, it generates SRC (Security Random Code) radio signal with random coding to prevent spy copying.
- By integrating hamming coding and CRC (Cyclic Redundancy Check) technology, it provides accuracy in radio data transmission.
- An unique Non-Repeated security code (ID code), it prevents the error output and improves the operating safety.

## Heavy Duty

Pushbutton key acts as important role for industrial remote controller. F21-E2B uses a super heavy-duty pushbutton against all severe conditions.

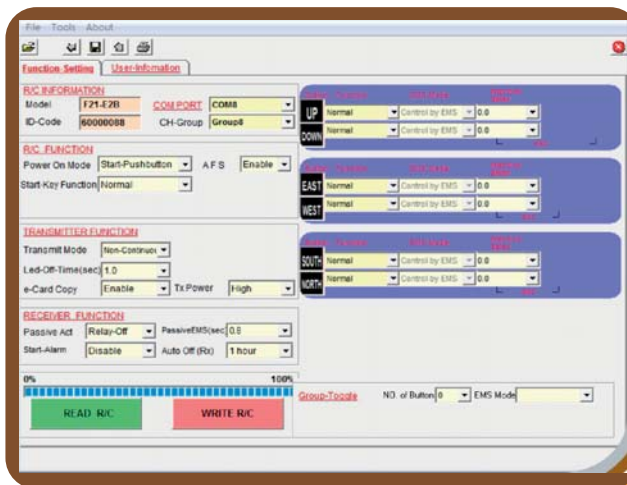


## FREE Powerful Software Program

Free software consists millions worldwide users' experience.

F21-E2B software is the total solution for industrial remote controller.

The software provides great flexibility to meet most of the applications. It allows reprogramming numbers of parameters such as operation function, emission power, and receiver off time, etc.



## Software features

The software provides great flexibility to meet most of the applications. It allows reprogramming numbers of parameters such as pushbutton function mode (Normal, Toggle, Magnet ON/OFF), Interlock Start Alarm, Selectable Emission Power, and Receiver Auto-Off Time, etc.

# F21-E2B Series

**E2S**  
Transmitter



Dimension (mm):  
**135 x 55 x 40**  
Weight (g):  
**Apprx. 155 g**  
(including batteries)

**E2B**  
Transmitter



Dimension (mm):  
**165 x 75 x 45**  
Weight (g):  
**Apprx. 295 g**  
(including batteries)

**E2M**  
Transmitter



Dimension (mm):  
**165 x 50 x 50**  
Weight (g):  
**Apprx. 200 g**  
(including batteries)

**E2B-8**  
Transmitter



Dimension (mm):  
**165 x 75 x 45**  
Weight (g):  
**Apprx. 305 g**  
(including batteries)

**E2M-8**  
Transmitter



Dimension (mm):  
**160 x 50 x 50**  
Weight (g):  
**Apprx. 210 g**  
(including batteries)

**E2B**  
Receiver



Dimension (mm):  
**200 x 85 x 60**  
Weight (g):  
**Apprx. 785 g**  
(including cable)  
Power: **24 / 36 / 48 / 110 / 220 / 380VAC**  
**±20%**(Single Option)

**E2B-8**  
Receiver

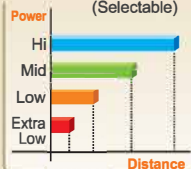


Dimension (mm):  
**200 x 85 x 60**  
Weight (g):  
**Apprx. 805 g**  
(including cable)  
Power: **24 / 36 / 48 / 110 / 220 / 380VAC**  
**±20%**(Single Option)

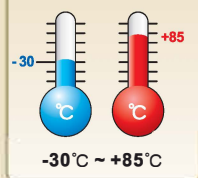
Power : Two AA size batteries. (Carbon Zinc, Alkaline, Ni-MH, Ni-Cd are all acceptable)

Note: For example E2S-TX + E2B-RX = F21-E2S(complete set)  
For example E2M-8-TX + E2B-8-RX = F21-E2M-8(complete set)

Operating Range:  
Apprx. 20~100 Meters.  
(Selectable)



Operating Temp.:



ID Code:

**4.3 Billion Sets**  
**4294967296**  
An unique  
Non-Repeated 32 Bit

