



Dual Rugged Joystick  
with “5”steps

The Perfect Partner for Material Handling  
and Processing Machinery



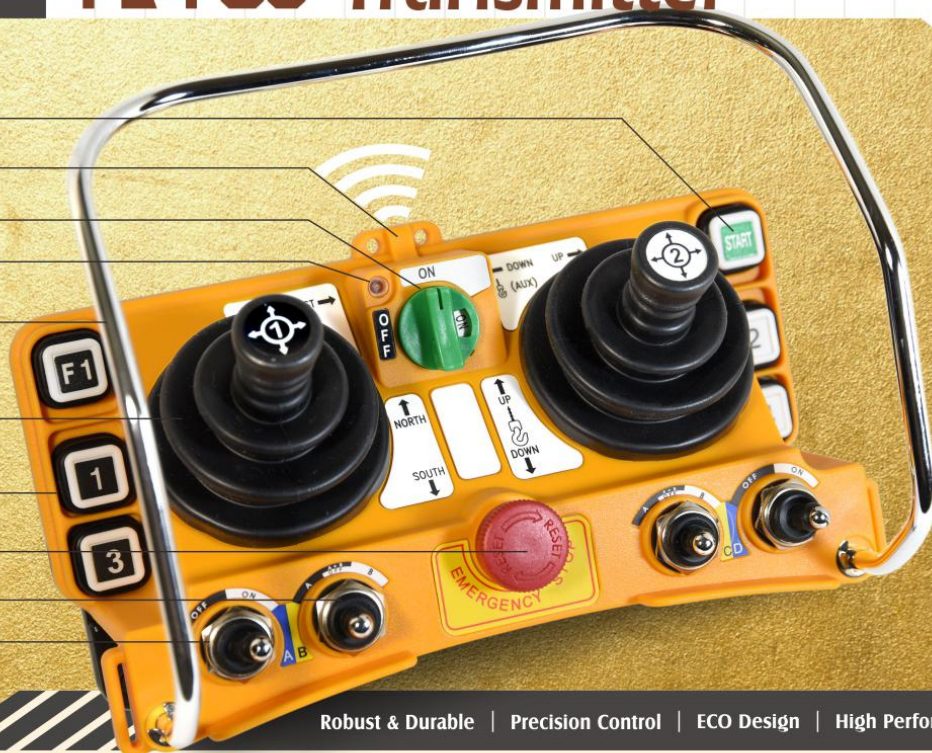
TELECRANE®

**F24-60<sup>+</sup>** INDUSTRIAL

**JOYSTICK REMOTE  
CONTROLLER**



- Start Button
- High Gain Internal Antenna
- Rotary Key
- Multi-function Indicator
- Protection Rim
- 5 Steps Dual Axis Joystick
- Programmable Function Pushbutton
- EMS Button
- 3 Positions Toggle Switch (Waterproof)
- 2 Positions Toggle Switch (Waterproof)



Robust & Durable | Precision Control | ECO Design | High Performance

## 5 Steps Dual Axis Joystick (Patent)

A) Long life silicon rubber structure (Patent)

B) Sealed construction Angle Detector (Dust-free)



# F24-60<sup>+</sup> Receiver



- A) Receiver Handle Bar
- B) Removable Antenna
- C) RF module with Anti-interference metallic housing
- D) Computer Programmable interface connector
- E) CPU 1
- F) NC/NO relay available (Option)
- G) Jumper for customized COM line configuration

- H) AC and DC power supply are available
- I) Cable Gland
- J) Dip Switch for changing channel without computer
- K) SQ Indicator
- L) TCXO (Temperature Compensate Crystal Oscillator) provides higher levels of radio accuracy against severe temperature changes
- M) CPU 2

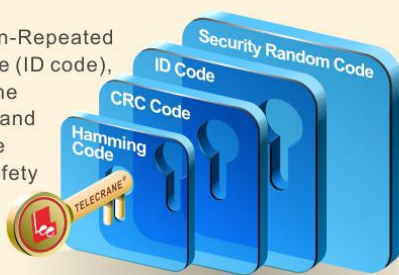
- N) A sophisticated Surface Acoustic Wave (SAW) filter blocks unwanted radio signal to ensure smooth radio link
- O) Receiver Shock Absorber



## F24-60<sup>+</sup> Features

### Security Enhanced & Anti-Spy

- Transmitter with its powerful processor, it generates SRC (Security Random Code) radio signal with random coding to prevent spy copying
- By integrating hamming coding and CRC (Cyclic Redundancy Check) technology, it provides accuracy in radio data transmission
- A unique Non-Repeated security code (ID code), it prevents the error output and improves the operating safety



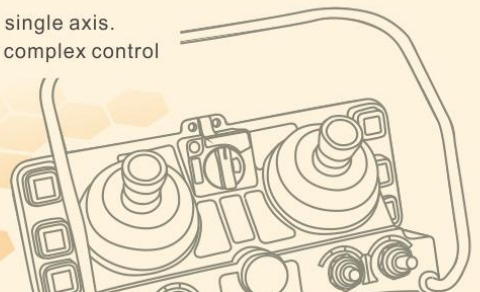
### Take and Release

This feature allows two or more operators the ability to control one crane system from opposite ends of a long runway or cross travel



### Relay Configuration

Control up to 16 relays for single axis. It gives great flexibility for complex control









# F24-60<sup>+</sup> INDUSTRIAL JOYSTICK REMOTE CONTROLLER

www.telecrane.com.tw

	5 Steps Joystick	x 2		Maximum 40 relays output (Software setting)	
	1 Step Pushbutton	x 6			
	EMS Button	x 1			
	Rotary Key	x 1		NC / NO Relay (Option)	
	2 Positions Toggle Switch	x 2			
	3 Positions Toggle Switch	x 2		Passive Antenna (Option)	
General Specifications					
Operating Temperature		-35℃ ~ +80℃	Frequency		433.05 ~ 434.79 MHz
Operating Range		Up to 100 Meters	ID Code		4.3 Billion Sets Non-Repeated (32 Bit)
Power	Transmitter	4 pcs AA size batteries Alkaline/ rechargeable acceptable	Hamming Distance		> 20
	Receiver	AC 24 / 48 / 110 / 220 / 380V & DC 12 ~ 24V (selectable)	Dimensions / Weight	Transmitter	220 x 110 x 90 mm / 860g (excluding batteries)
				Receiver	2290 x 230 x 70 mm / 2200g (excluding cable)

## Software



### Main page

- ID code, Manufactured date
- Relay in usage display
- Select relays for joysticks

### Function Setting

- Remote control function setting
- Pushbutton function setting
- Toggle Switch function setting

### Joystick Setting

- Joystick function setting
- Joystick-Relay control display
- Joystick-Axis control setting

## Accessories



CD-ROM & USB  
Interface Cable



Copier



External Passive  
Antenna Set



TELECRANE®

www.telecrane.com.tw

Patents: www.patentdata.net/info