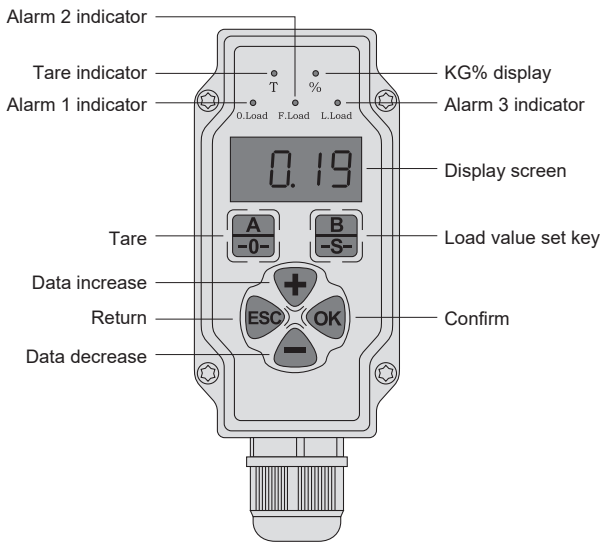


SUMT-QZX(A)

USER MANUAL V 2.1

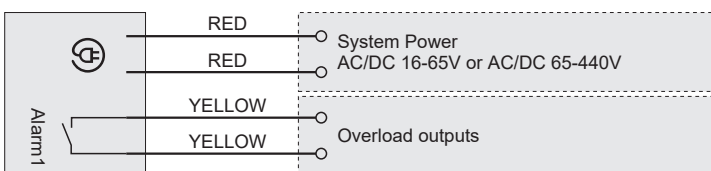
NINGBO SUMMIT ELECTRONIC CO.,LTD

Controller Appearance

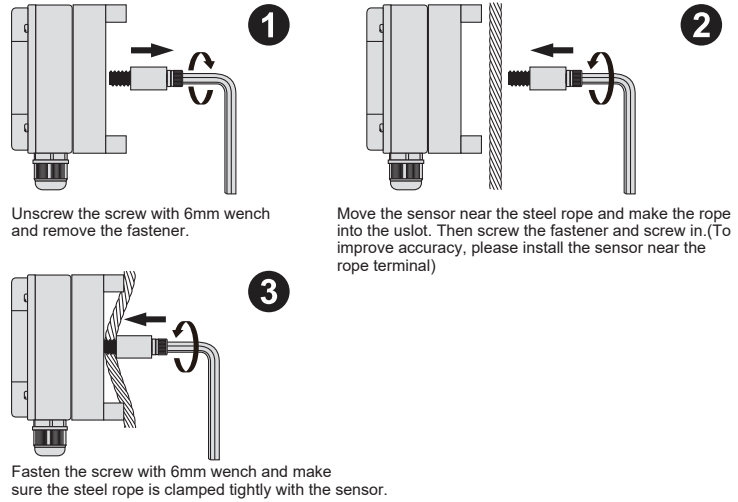


	Confirm	A -0-	Long press:TARE. Short press:Tare or not
	Return	B -S-	Long press:Rated load, roping setting. Short press:KG% switch
	Long press:Known weight modification. Short press:Data increase(Long press for fast increase)		
	Data decrease (Long press for fast decrease)		

Wirings



Installation



Calibration (Choose one method)

Remind

- Tare indicator blinks means the absent of tare operation. Alarm indicator blinks means the absent of rated load setting.
- To modify the rated load after the calibration, you must need take the step B in the method 2.
- In method 2, the weight used must be more than 50% of rated load otherwise, the accuracy would be low.

Method 1: No weight calibration (recommended)

A Tare → Empty car, long press [A] for 5s, display from [9999] to [0000] till display [2Err].

B Rated load and roping calibration → Long press[B] for 5s, it display [FULL], push [OK], push [+] or [-] to input the rated load value. Then push [OK] to save data. [roPE] push [OK], push [+] or [-] to input roping value. Then push [OK] to save data.

Method 2: Know weight calibrations

A Tare → Empty car, long press [A] for 5s, display from [9999] to [0000] till display [2Err].

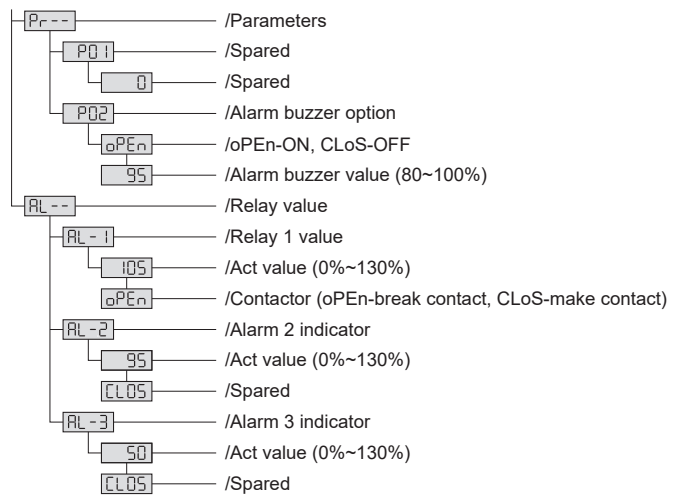
B Rated load calibration → Long press[B] for 5s, it display [FULL], push [OK], push [+] or [-] to input the rated load value. push [OK] to save data. Then push [ESC] to return.

B Known weight → Put the known weight in the car, long press [+] for 5s, data blinks to indicate the weight(KG), push [+] or [-] to modify the data to real weight, the push [OK], it display form [9999] to [0000] and save data automatically.

Menu functions

Push and release [OK] and [ESC] at the same time. It displays [CC00]. Push [+] or [-] till display [CC11]. Then push [OK] into menu options.

- Press [OK] to next menu.
- Press [ESC] to previous menu.
- Press [+] or [-] to change in same level.
- Press [OK] to confirm the values after program.
- Act value is ratio with rated load. 80% means:80% of rated load.



Error codes

Codes	Reasons	Solutions
E01	During known weight calibration, there is absent of TARE operation.	Make the cabin to be empty, Long press [A] for 5 seconds to finish TARE operation.
E03	During known weight calibration, the weight is less than 100KG.	Use the weight of more than 50% of rated weight to calibrate.
E05	The load is exceed the load cell MAX. capacity.	Make the load within the load cell capacity or change load cells with bigger capacity.